

PUBLIC LANDS account for almost 80 percent of the state of Utah! CNHA works in partnership with three land management agencies.

The **Bureau of Land Management (BLM)** manages 22 million acres of land in Utah and Colorado with multiple recreation opportunities, including fishing, hiking, camping, and motorized vehicle use. Commercial activities, such as mining, grazing and forestry are common in this area. Conservation of plants, wildlife, habitat, and archaeological sites are included in the BLM mission.

The **U.S. Forest Service (USFS)**, administers 8 million acres of land in Utah for multiple uses and for sustainable yield of renewable resources (water, forage, wildlife, wood) and recreation. It is the largest forestry research organization in the world.

The **National Park Service (NPS)** administers 2 million acres at 13 sites in the southeast Utah region. Its mission is to conserve scenery, wildlife, natural and historic objects, while providing public enjoyment which leaves the land unimpaired for future generations.

CANYONLANDS NATURAL HISTORY ASSOCIATION

3015 S. Highway 191, Moab, Utah 84532

www.cnha.org

Check us on: [facebook.com/moabcnha](https://www.facebook.com/moabcnha)

Check out the CNHA - Official Arches Guide in the Apple App Store



Canyonlands Natural History Association

Partners in Public Land Education

Membership Program



MISSION STATEMENT

CANYONLANDS NATURAL HISTORY ASSOCIATION is a non-profit organization which exists solely to assist the National Park Service, the U.S. Forest Service, and the Bureau of Land Management in their education and visitor efforts. Proceeds from sales support agencies' educational, interpretive, and scientific programs on the Colorado Plateau.

The funds we donate, over \$700,000 annually – support agency programs including, outdoor education, equipment and supplies for rangers / naturalists, and funding for research.



3015 S. Highway 191, Moab, Utah 84532;
(800) 840 8978 toll free voice; (435) 259 6003
voice; (435) 259 8263 fax; infobox@cnha.org;
www.cnha.org website.

Check us out on Facebook  [facebook.com/moabcnha](https://www.facebook.com/moabcnha)
Check out the CNHA - Official Arches Guide  in the Apple App Store.



YOUR MEMBERSHIP benefits your public lands through CNHA's annual donations to agency programs. You benefit too! We offer several membership options. (Dues are paid yearly.)

Individual Member - \$35

- Membership card, 15% discount at CNHA bookstores and website, discount with more than sixty non-profit cooperating associations throughout the U.S., E-Newsletters (Multiple), CNHA Member decal, Invitation to members-only events.

Plateau Member - \$50

Plateau International - \$55

- All benefits of the Individual Member, Two (2) membership cards, Subscription to "Sojourns Magazine" – 48-page full color journal (2 issues, January/July), \$26 value.

Discovery Member - \$100

- All benefits of the Plateau Member, Canyon Country Calendar, 75% of your contribution will go towards our Discovery Pool Program.*

Partner Member - \$250

- All benefits of the Discovery Member, \$150 of your contribution will go towards our Discovery Pool Program.*

Benefactor Member - \$500

- All benefits of the Partner Member, CNHA tote bag, Grand Views Driving Guide – Highlights nineteen spectacular vistas (48 pages), \$300 of your contribution will go towards our Discovery Pool Program. *

*The Discovery Pool is a program in which special funds are set aside to promote science and research by our public land partners.

(See our website for more details)

Explore our on-line catalog at www.cnha.org for books, maps, audio, video, calendars, posters & more!

EDUCATION



Photo courtesy of Dr. Tyler Nordgren

Through your membership donation, CNHA is able to fund educational projects such as; documentation and conservation of rock art, outdoor education, monitoring of bighorn sheep, and the night sky program at Natural Bridges National Monument.



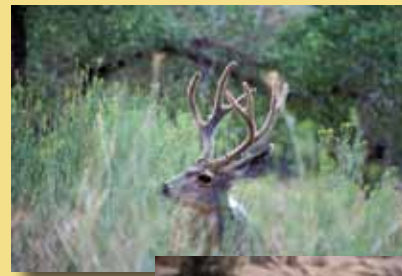
INTERPRETATION



Your membership supports many interpretive projects such as; the Student Conservation Association, trail head signage, and the Junior Ranger Program, along with the recording of oral histories and providing informative trail guides for the visitor.



DONATION



Donations made to CNHA, support projects through Discovery Pool Grants, for scientific research on the Colorado Plateau. CNHA also handles donations for other partnerships, such as friend's groups and memorial funds.

MEMBERSHIP/DONATION

I would like to have the following annual membership:

- INDIVIDUAL MEMBER \$35
- PLATEAU MEMBER \$50
(\$55 for addresses outside of US)
- DISCOVERY MEMBER \$100
- PARTNER MEMBER \$250
- BENEFACTOR MEMBER \$500
- I WOULD LIKE TO MAKE AN ADDITIONAL DONATION \$_____

Name _____

Address _____

City _____

State _____

Zip _____

Phone (____) _____

E-mail address _____

Cash Check Enclosed

Mastercard Visa Discover CVC _____

Card No. _____ Exp. _____

Signature _____

Contributions are tax-deductible to the extent provided by law.

PLEASE DO NOT SEND GIFT FOR MY MEMBERSHIP/DONATION

Multi-agency Visitor Centers:

- A. Moab Information Center
- B. Southeast Utah Welcome Center



area served

Areas Served by Canyonlands Natural History Association:

- | | |
|--|---------------------------------------|
| 1. Arches National Park | 8. Hovenweep National Monument |
| 2. Canyon Rims Recreation Area | 9. Manti-La Sal National Forest |
| 3. Canyonlands National Park | 10. Natural Bridges National Monument |
| 4. Dark Canyon Wilderness Area | 11. San Juan River |
| 5. Anasazi Heritage Center (Dolores, CO) | 12. San Rafael Swell |
| 6. Grand Gulch Primitive Area | 13. Westwater Canyon |
| 7. Henry Mountain Resource Area | 14. Blanding Information Center |